

1

計畫事情或解決問題有困難

無法處理每個月都在管理的帳單。

Difficulty in making plans or solving problems:

Not longer able to manage the monthly bills.



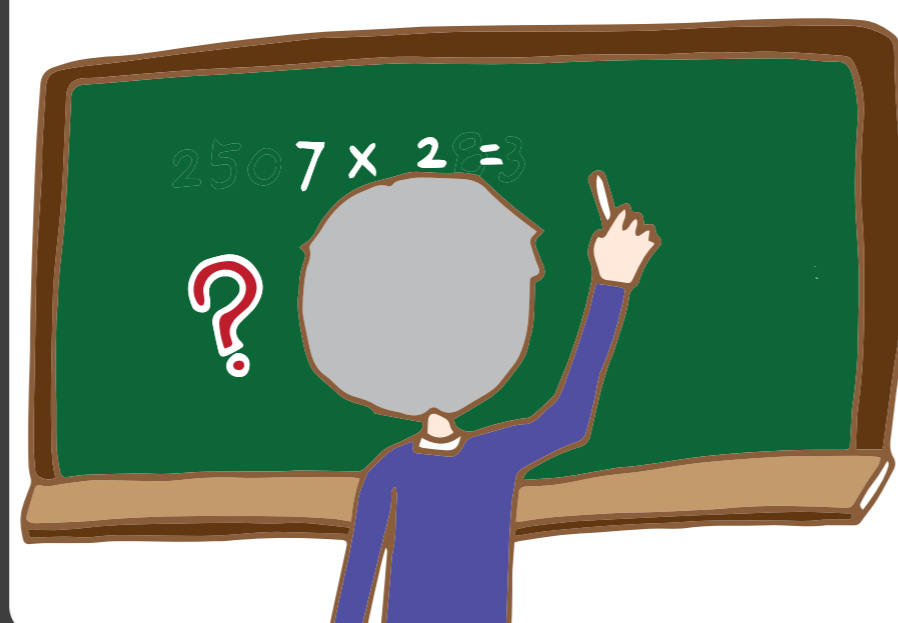
3

無法勝任原本熟悉的事物

例如數學老師對於加減算數常出錯。

Failure to do originally familiar tasks:

e.g., a mathematics teacher makes frequent mistakes in addition and subtraction.



5

難以理解視覺影像和空間之關係

例如誤認鏡子中的自己是另一個人。

Difficulty in understanding how visual images are related to space:

e.g., mistaking oneself in mirror as another person.

你是誰?
Who are you?



7

東西擺放錯亂且失去回頭尋找的能力

例如錢包放在冰箱裡面、拖鞋放到被子裡找不到。

Misplacing things and inability to look for them:

e.g., putting the wallet into the freezer or putting the slippers into the blanket on bed and can't find them.



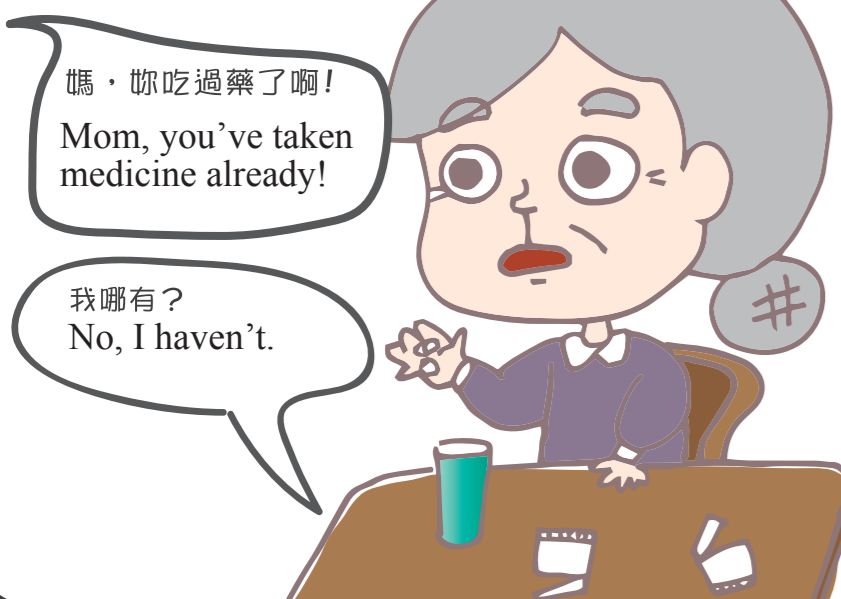
2

記憶力減退到影響生活

常常重複發問、重複購物、容易忘記近期發生的事。

Memory loss causes an impact on daily life:

Ask same questions repeatedly; make repeated purchases; prone to forgetting recent events.



4

對時間地點感到混淆

例如在自家周圍迷路而找不到回家的方向或已經在家中、卻吵著要回家。

Confusion about time and place:

e.g., getting lost nearby home and failing to find the way back, or asking to go home while already at home.



6

語言表達或書寫出現困難

例如忘記用來裝水的工具叫杯子。

Difficulty in verbal expression or writing:

e.g., forgetting the word "cup" as the tool that holds water.



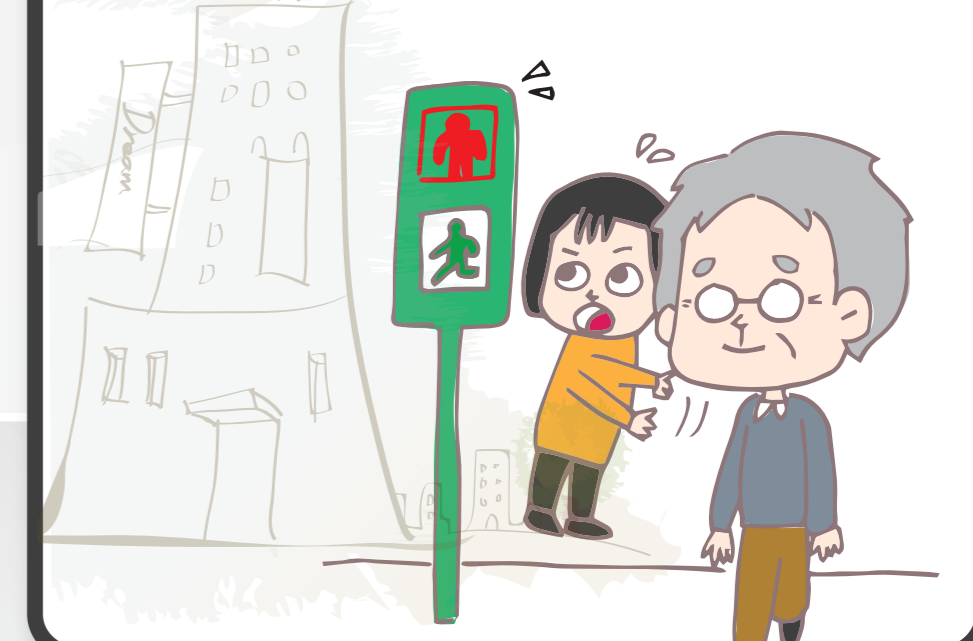
8

判斷力變差或減弱

例如過馬路不看紅綠燈。

Deterioration or weakening of judgment:

e.g., crossing the road without looking at the traffic light.



| 機構名稱 Name of Institution | 電話 Telephone | 住址 Address | 科別 Department |
|--|----------------------|--|--|
| 國立成功大學醫學院附設醫院 National Cheng Kung University Hospital | 06 2353535 #3579 | 臺南市北區勝利路 138 號 No. 138, Shengli Rd., North Dist., Tainan City | 1. Department of Neurology 神經內科 2. Department of Psychiatry 精神科 3. Department of Internal Medicine – Division of Geriatrics 內科-老人醫學科 |
| 奇美醫療財團法人奇美醫院 Chi Mei Hospital, Chi Mei Medical Center | 06 2812811 | 臺南市永康區中華路 901 號 No. 901, Zhonghua Rd., Yongkang Dist., Tainan City | Memory Disorder Clinic 記憶障礙特別門診 |
| 奇美醫療財團法人奇美醫院樹林院區 Chi Mei Hospital Shulin Branch, Chi Mei Medical Center | 06 2228116 | 臺南市南區樹林街二段 442 號 No. 442, Sec. 2, Shulin St., South Dist., Tainan City | Psychiatric Clinic 精神科門診看診 |
| 衛生福利部臺南醫院 Tainan Hospital, Ministry of Health and Welfare | 06 2200055 | 臺南市中西區中山路 125 號 No. 125, Zhongshan Rd., West Central Dist., Tainan City | 1. Department of Neurology 神經內科 2. Department of Psychiatry 精神科 |
| 郭綜合醫院 Kuo General Hospital | 06 2221111 #1296 | 臺南市中西區民生路二段 22 號 No. 22, Sec. 2, Minsheng Rd., West Central Dist., Tainan City | 1. Neurology Clinic 神經內科門診 2. Dementia Clinic 失智症特別門診 |
| 台灣基督長老教會新樓醫療財團法人台南新樓醫院 Tainan Sin-Lâu Hospital, Sin-Lâu Medical Foundation, The Presbyterian Church in Taiwan | 06 2748316 #5872 | 臺南市東區東門路一段 57 號 No. 57, Sec. 1, Dongmen Rd., East Dist., Tainan Cit | 1. Department of Neurology 神經內科 2. Department of Psychiatry 身心內科 |
| 台南市立醫院(委託秀傳醫療社團法人經營) Tainan Municipal Hospital (managed by Show Chwan Medical Care Corporation) | 06 2609926 | 臺南市東區崇德路 670 號 No. 670, Chongde Rd., East Dist., Tainan City | Department of Neurology 神經內科 |
| 臺南市立安南醫院-委託中國醫藥大學興建經營 Tainan Municipal An-Nan Hospital – established and managed by China Medical University | 06 3553111 | 臺南市安南區州南里 12 鄰長和路二段 66 號 No. 66, Sec. 2, Changhe Rd., Neighborhood 12, Zhounan Village, Annan Dist., Tainan City | 1. Department of Neurology 神經內科 2. Department of Psychiatry 精神科 |
| 衛生福利部嘉南療養院 Jiannan Psychiatric Center, Ministry of Health and Welfare | 06 2795019 | 臺南市仁德區仁德里裕忠路 539 號 No. 539, Yuzhong Rd., Rende Village, Rende Dist., Tainan City | 1. Department of Neurology 神經內科 2. Department of Psychiatry 精神科 |
| 台灣基督長老教會新樓醫療財團法人麻豆新樓醫院 Madou Sin-Lâu Hospital, Sin-Lâu Medical Foundation, The Presbyterian Church in Taiwan | 06 5702228 | 臺南市麻豆區小埤里芥子林 20 號 No. 20, Lingzilin, Xiaobi Village, Madou Dist., Tainan City | Department of Psychiatry 身心內科 |
| 奇美醫療財團法人柳營奇美醫院 Chi Mei Hospital Liouying, Chi Mei Medical Center | 06 6226999 | 臺南市柳營區太康里太康 201 號 No. 201, Taikang, Taikang Village, Liuying Dist., Tainan City | Department of Neurology 神經內科 |
| 永川醫院 YungChuan Hospital | 06 2245771 | 臺南市中西區成功路 169 號 No. 169, Chenggong Rd., West Central Dist., Tainan City | 1. Department of Family Medicine 家醫科 2. Department of Internal Medicine 內科 |
| 永和醫院 Yungho Hospital | 06 2231191 | 臺南市中西區府前路一段 304 巷 2 號 No. 2, Ln. 304, Sec. 1, Fuqian Rd., West Central Dist., Tainan City | Department of Internal Medicine 內科 |
| 仁愛醫療社團法人仁愛醫院 Jen-Ai Hospital, Jen-Ai Medical Foundation | 06 2213111 | 臺南市東區北門路一段 10 號 No. 10, Sec. 1, Beimen Rd., East Dist., Tainan City | Department of Neurology 神經內科 |
| 高雄榮民總醫院臺南分院 Kaohsiung Veterans General Hospital Tainan Branch | 06 3125101 | 臺南市永康區復興路 427 號 No. 427, Fuxing Rd., Yongkang Dist., Tainan City | 1. Department of Psychiatry 心身科 2. Department of Geriatrics 高齡醫學科 |
| 衛生福利部臺南醫院新化分院 Xinhua Branch, Tainan Hospital, Ministry of Health and Welfare | 06 5911929 #2021 | 臺南市新化區那拔里牧場 72 號 No. 72, Pasture, Naba Village, Xinhua Dist., Tainan City | 1. Department of Neurology 神經內科 2. Department of Psychiatry 精神科 |
| 財團法人台灣省私立台南仁愛之家附設精神療養院 Tainan Home of Philanthropy Psychiatric Center | 06 5902336 | 臺南市新化區中山路 20 號 No. 20, Zhongshan Rd., Xinhua Dist., Tainan Cit 臺南市仁德區中山路 864 號 No. 864, Zhongshan Rd., Rende Dist., Tainan City 臺南市東區大同路一段 69 號 No. 69, Sec. 1, Datong Rd., East Dist., Tainan City | Department of Psychiatry 精神科 |
| 衛生福利部胸腔病院 Chest Hospital, Ministry of Health and Welfare | 06 2705911 | 臺南市關廟區中正路 435 號 No. 435, Zhongzheng Rd., Guanmiao Dist., Tainan City | Department of Neurology 神經內科 |
| 吉安醫院 Ji-An Hospital | 06 6025115 | 臺南市佳里區興化里 606 號 No. 606, Jialixing, Jiaying Village, Jiali Dist., Tainan City | 1. Department of Neurology 神經內科 2. Department of Psychiatry 精神科 |
| 奇美醫療財團法人佳里奇美醫院 Chi Mei Hospital Chiali, Chi Mei Medical Center | 06 7263333 #33915 | 臺南市新營區隋唐街 228 號 No. 228, Suitang St., Xinying Dist., Tainan City | Department of Neurology 神經內科 |
| 營新醫院 Ever New Hospital | 06 6592345 #705 | 臺南市新營區中興路 10 號 No. 10, Zhongxing Rd., Xinying Dist., Tainan Cit | Department of Neurology 神經內科 |
| 新興醫療社團法人新興醫院 Shinshen Hospital, Shinshen Medical Foundation | 06 6330011 | 臺南市新營區信義街 73 號 No. 73, Xinyi St., Xinying Dist., Tainan City | 1. Department of Neurology 神經內科 2. Department of Psychiatry 精神科 |

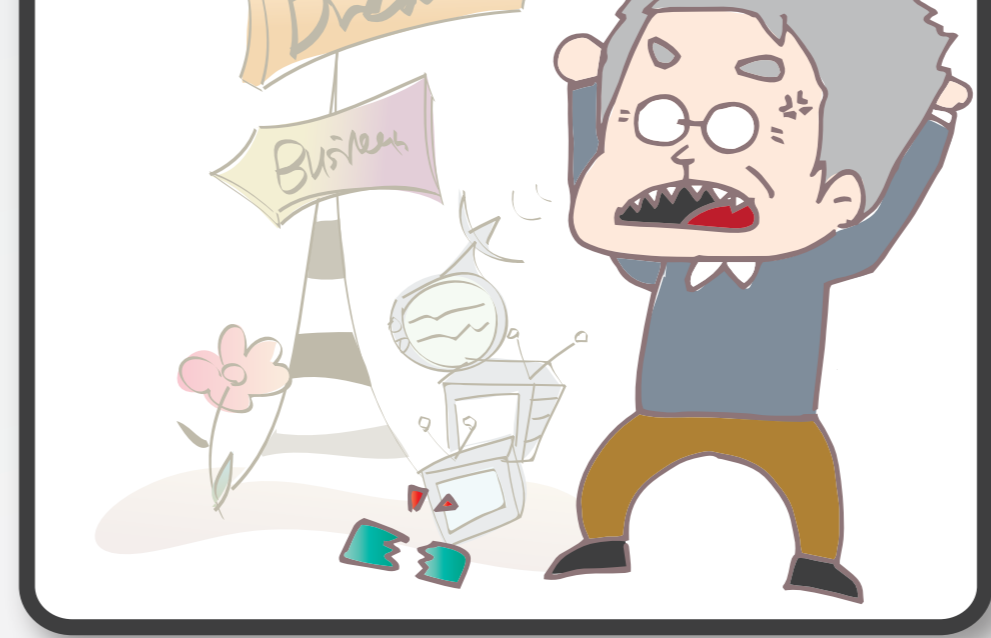
9

從職場或社交活動中退出
變得比較被動，對於各項活動及嗜好失去興趣。
Withdrawal from the workplace or social events:
Becoming passive, losing interest in various activities and hobbies.



10

情緒和個性的改變
易出現不尋常生氣或激動反應、疑心病重、口不擇言等
Emotional fluctuation and change of character:
e.g., prone to unusual anger or agitation, being very paranoid and indiscreet, etc.

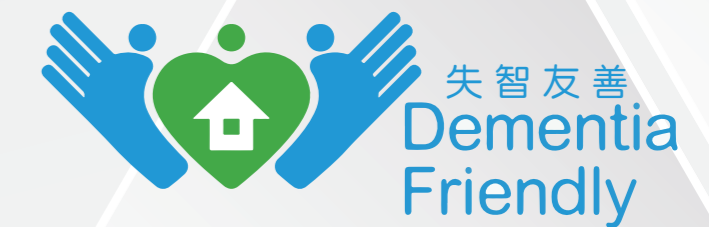


失智症 10大警訊

Top Ten Warning Signs of Dementia

若出現這些症狀
請及早就醫

Consult a doctor as soon as possible when these signs emerge.



臺南市政府失智症專區
Public Health Bureau of Tainan City Government, Dementia Page

臺南市政府衛生局 關心您
Public Health Bureau, Tainan City Government
Cares for You!

經費(部分經費)由衛生福利部運用菸捐支應
(Partly) Funded by Health and Welfare Surcharge of Tobacco Products